

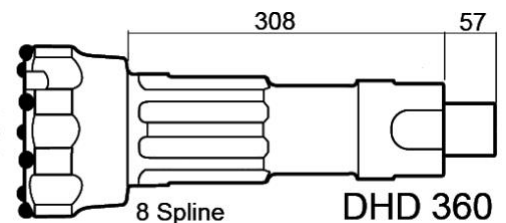
VENTAJAS

Leader for performance in its class. The PMK 600HD is the best solution for drilling contractors and owner-operators seeking maximum productivity and the fastest DTH hammer in the world. Heavy duty hammer with 145 mm diameter outer for extended services life in abrasive conditions and is also suitable for water well drilling. Superior Designs, built for drilling 165 - 216 mm (6 1/2 " - 8 1/2 ") dia. holes and operates at an optimum air pressure between 10.5 - 24 bar (150 - 350psi). The PMK 600HD hammer is designed to accept Button Bits with a shank Ingersoll Rand DHD 360 or ATLAS COPCO COP 64 type of Button Bits.

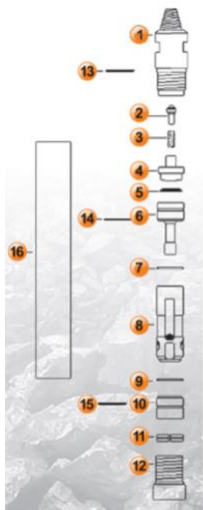
ESPECIFICACIONES

HAMMER SPECIFICATIONS		AIR CONSUMPTION			
		PSI	BAR	CFM	M ³ /min
WEIGHT	106 Kg	150	10,3	329	9,31
LENGTH	1283 mm	200	13,8	509	14,4
OUTSIDE DIAM. CYLINDER	145 mm	250	17,2	707	20
MAX WORKING PRESSURE	24 BAR	300	20,7	930	26,3
THREAD	3" 1/2 API REG	350	24	1034	38

DISEÑO TÉCNICO



DESCRIPCIÓN PARTES



ITEM	DESCRIPTION	PART N°
1	BAKHEAD	OC-01-06
2	CHECK VALVE	OC-02-06
3	VALVE SPRING	OC-03-06
4	AIR DISTRIBUTOR	OC-04-06
5	SPRING B.	OC-05-06
6	CONTROL TUBE	OC-06-06
7	RETAINING RING	OC-07-06
8	PISTON	OC-08-06
9	RETAINING RING	OC-09-06
10	GUIDE BUSH	OC-10-06
11	BIT RETAINING RING	OC-11-06
12	CHUCK	OC-12-06
13	O-RING	OC-13-06
14	O-RING	OC-14-06

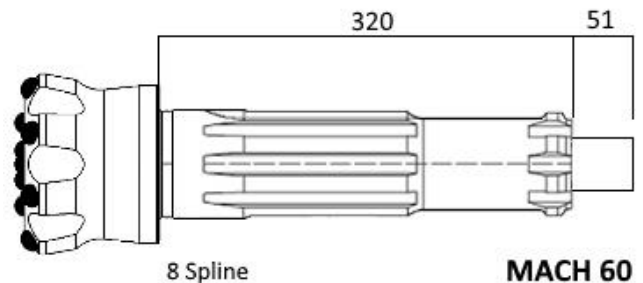
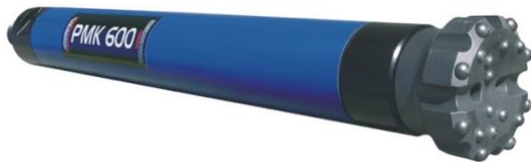
VENTAJAS

Leader for performance in its class. The PMK 600MHM is the best solution for drilling contractors and owner-operators seeking maximum productivity and the fastest DTH hammer in the world. Heavy duty hammer with 145 mm diameter outer for extended services life in abrasive conditions and is also suitable for water well drilling. Superior Designs, built for drilling 165 - 216 mm (6 1/2 " - 8 1/2 ") dia. holes and operates at an optimum air pressure between 10.5 - 24 bar (150 - 350psi). The PMK 600MHM hammer is designed to accept Button Bits with shank HALCO MACH 60 type.

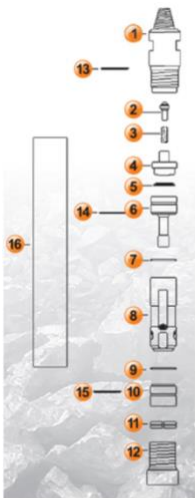
ESPECIFICACIONES

HAMMER SPECIFICATIONS		AIR CONSUMPTION			
		PSI	BAR	CFM	M ³ /min
WEIGHT	106 Kg	150	10,3	329	9,31
LENGTH	1180 mm	200	13,8	509	14,4
OUTSIDE DIAM. CYLINDER	145 mm	250	17,2	707	20
MAX WORKING PRESSURE	24 BAR	300	20,7	930	26,3
THREAD	3" 1/2 API REG	350	24	1034	38

DISEÑO TÉCNICO



DESCRIPCIÓN PARTES



ITEM	DESCRIPTION	PART N°
1	BAKHEAD	OC-01-06
2	CHECK VALVE	OC-02-06
3	VALVE SPRING	OC-03-06
4	AIR DISTRIBUTOR	OC-04-06
5	SPRING B.	OC-05-06
6	CONTROL TUBE	OC-06-06
7	RETAINING RING	OC-07-06
8	PISTON	OC-08-06
9	RETAINING RING	OC-09-06
10	GUIDE BUSH	OC-10-06
11	BIT RETAINING RING	OC-11-06
12	CHUCK	OC-12-06
13	O-RING	OC-13-06
14	O-RING	OC-14-06
15	O-RING	OC-15-06
16	CYLINDER	OC-16-06

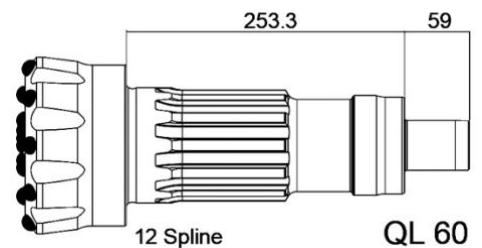
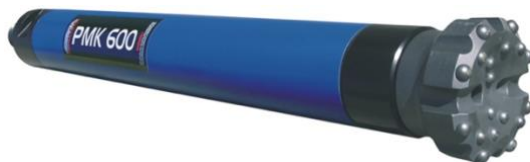
VENTAJAS

Leader for performance in its class. The PMK 600HQ is the best solution for drilling contractors and owner-operators seeking maximum productivity and the fastest DTH hammer in the world. Heavy duty hammer with 145 mm diameter outer for extended services life in abrasive conditions and is also suitable for water well drilling. Superior Designs, built for drilling 165 - 216 mm (6 1/2 " - 8 1/2 ") dia. holes and operates at an optimum air pressure between 10.5 - 24 bar (150 - 350psi). The PMK 600HQ hammer is designed to accept Button Bits with shank Ingersoll Rand QL60 or ATLAS COPCO / EPIROC COP 64 GOLD type.

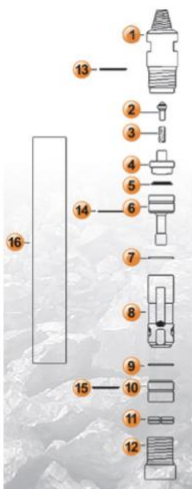
ESPECIFICACIONES

HAMMER SPECIFICATIONS		AIR CONSUMPTION			
		PSI	BAR	CFM	M ³ /min
WEIGHT	106 Kg	150	10,3	329	9,31
LENGTH	1180 mm	200	13,8	509	14,4
OUTSIDE DIAM. CYLINDER	145 mm	250	17,2	707	20
MAX WORKING PRESSURE	24 BAR	300	20,7	930	26,3
THREAD	3" 1/2 API REG	350	24	1034	38

DISEÑO TÉCNICO



DESCRIPCIÓN PARTES



ITEM	DESCRIPTION	PART N°
1	BAKHEAD	OC-01-06
2	CHECK VALVE	OC-02-06
3	VALVE SPRING	OC-03-06
4	AIR DISTRIBUTOR	OC-04-06
5	SPRING B.	OC-05-06
6	CONTROL TUBE	OC-06-06
7	RETAINING RING	OC-07-06
8	PISTON	OC-08-06
9	RETAINING RING	OC-09-06
10	GUIDE BUSH	OC-10-06
11	BIT RETAINING RING	OC-11-06
12	CHUCK	OC-12-06
13	O-RING	OC-13-06
14	O-RING	OC-14-06
15	O-RING	OC-15-06
16	CYLINDER	OC-16-06

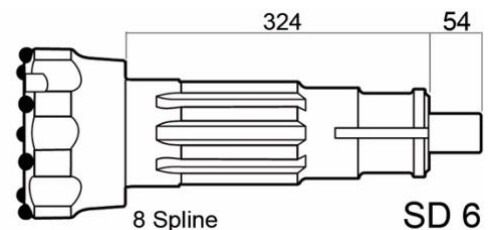
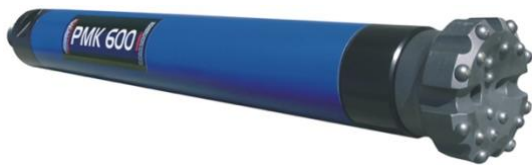
VENTAJAS

Leader for performance in its class. The PMK 600HS is the best solution for drilling contractors and owner-operators seeking maximum productivity and the fastest DTH hammer in the world. Heavy duty hammer with 145 mm diameter outer for extended services life in abrasive conditions and is also suitable for water well drilling. Superior Designs, built for drilling 165 - 216 mm (6 1/2 " - 8 1/2 ") dia. holes and operates at an optimum air pressure between 10.5 - 24 bar (150 - 350psi). The PMK 600HS hammer is designed to accept Button Bits with shank Sandvik Mission SD6 type.

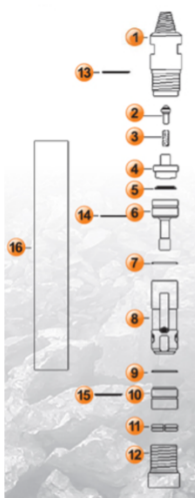
ESPECIFICACIONES

HAMMER SPECIFICATIONS		AIR CONSUMPTION			
		PSI	BAR	CFM	M ³ /min
WEIGHT	106 Kg	150	10,3	329	9,31
LENGTH	1283 mm	200	13,8	509	14,4
OUTSIDE DIAM. CYLINDER	145 mm	250	17,2	707	20
MAX WORKING PRESSURE	24 BAR	300	20,7	930	26,3
THREAD	3" 1/2 API REG	350	24	1034	38

DISEÑO TÉCNICO



DESCRIPCIÓN PARTES



ITEM	DESCRIPTION	PART N°
1	BAKHEAD	OC-01-06
2	CHECK VALVE	OC-02-06
3	VALVE SPRING	OC-03-06
4	AIR DISTRIBUTOR	OC-04-06
5	SPRING B.	OC-05-06
6	CONTROL TUBE	OC-06-06
7	RETAINING RING	OC-07-06
8	PISTON	OC-08-06
9	RETAINING RING	OC-09-06
10	GUIDE BUSH	OC-10-06
11	BIT RETAINING RING	OC-11-06
12	CHUCK	OC-12-06
13	O-RING	OC-13-06
14	O-RING	OC-14-06
15	O-RING	OC-15-06
16	CYLINDER	OC-16-06