

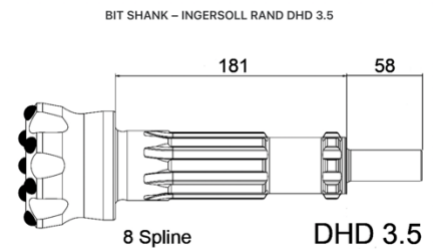
ADVANTAGE

A high performance DTH hammer for all rock conditions. Superior design, built for drilling 95 – 100 mm (3.75" – 4"1/8) dia. Holes and operates at an optimum air pressure between 10.35 – 24 bar (150-350 psi). Shank Ingersoll Rand DHD 3.5.

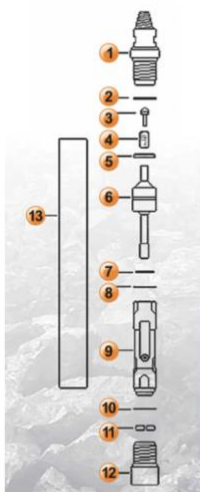
SPECIFICATIONS

HAMMER SPECIFICATIONS		AIR CONSUMPTION			
		PSI	BAR	CFM	M ³ /min
WEIGHT	25 Kg	150	10,3	95	2,6
LENGTH	863 mm	200	13,8	150	4,3
OUTSIDE DIAM. CYLINDER	85 mm	250	17,2	210	5,9
MAX WORKING PRESSURE	24 BAR	300	20,7	280	7,8
THREAD	2" 3/8 API REG	350	24	325	9,2

TECHNICAL DESIGN



DESCRIPTION PART



ITEM	DESCRIPTION	PART N°
1	BACKHEAD	OC-01-03
2	O-RING	OC-02-03
3	N.R. VALVE	OC-03-03
4	N.R.V. SPRING	OC-04-03
5	SPRING B.	OC-05-03
6	AIR DISTRIBUTOR	OC-06-03
7	O-RING	OC-07-03
8	RETAINING RING	OC-08-03
9	PISTON	OC-09-03
10	RETAINING RING	OC-10-03
11	BIT RETAINING RING	OC-11-03
12	CHUCK	OC-12-03
13	CYLINDER	OC-13-03