

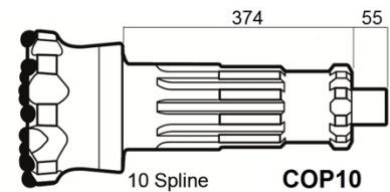
### ADVANTAGE

A High performance DTH hammer for all rock conditions and used in almost any drilling applications is suitable for a wide range of air pressures, 10.5 – 24 bar (150 – 350 psi). Superior Designs, built for drilling 254 – 305 mm (10" – 12") dia. holes the PMK 1000HS is designed to accept Button Bits with Shank ATLAS COPCO COP 10.

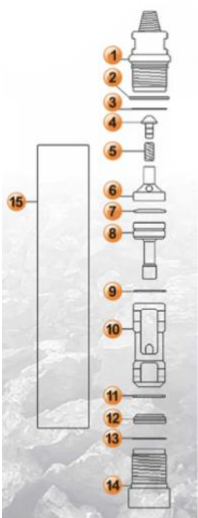
### SPECIFICATIONS

HAMMER SPECIFICATIONS		AIR CONSUMPTION			
		PSI	BAR	CFM	M <sup>3</sup> /min
WEIGHT	388 Kg				
LENGTH	1575 mm	150	10,3	672	19
OUTSIDE DIAM. CYLINDER	225 mm	200	13,8	1034	38
BORE DIAM.	175 mm	250	17,2	1445	41
PISTON WEIGHT	68 Kg.	300	20,7	1900	54
STROKE	127 mm	350	24	2300	67

### TECHNICAL DESIGN



### DESCRIPTION PART



ITEM	DESCRIPTION	PART N°
1	BAKHEAD	OC-01-10
2	BREAKOUT WASHERS 2	OC-02-10
3	O-RING	OC-03-10
4	CHECK VALVE	OC-04-10
5	VALVE SPRING	OC-05-10
6	AIR DISTRIBUTOR	OC-06-10
7	SPRING B.	OC-07-10
8	CONTROL TUBE	OC-08-10
9	RETAINING RING	OC-09-10
10	PISTON	OC-10-10
11	RETAINING RING	OC-11-10
12	BIT RETAINING RING	OC-12-10
13	O-RING	OC-13-10
14	CHUCK	OC-14-10
15	CYLINDER	OC-15-10

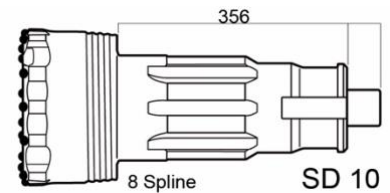
### ADVANTAGE

A High performance DTH hammer for all rock conditions and used in almost any drilling applications is suitable for a wide range of air pressures, 10.5 – 24 bar (150 – 350 psi). Superior Designs, built for drilling 254 – 305 mm (10" – 12") dia. holes the PMK 1000HS is designed to accept Button Bits with shank Sandvik Mission SD10.

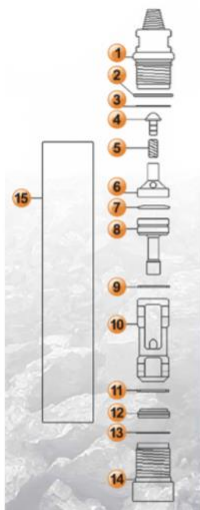
### SPECIFICATIONS

HAMMER SPECIFICATIONS		AIR CONSUMPTION			
WEIGHT	388 Kg	PSI	BAR	CFM	M <sup>3</sup> /min
LENGTH	1575 mm	150	10,3	672	19
OUTSIDE DIAM. CYLINDER	225 mm	200	13,8	1034	38
BORE DIAM.	175 mm	250	17,2	1445	41
PISTON WEIGHT	68 Kg.	300	20,7	1900	54
STROKE	127 mm	350	24	2300	67

### TECHNICAL DESIGN



### DESCRIPTION PART



ITEM	DESCRIPTION	PART N°
1	BAKHEAD	OC-01-10
2	BREAKOUT WASHERS 2	OC-02-10
3	O-RING	OC-03-10
4	CHECK VALVE	OC-04-10
5	VALVE SPRING	OC-05-10
6	AIR DISTRIBUTOR	OC-06-10
7	SPRING B.	OC-07-10
8	CONTROL TUBE	OC-08-10
9	RETAINING RING	OC-09-10
10	PISTON	OC-10-10
11	RETAINING RING	OC-11-10
12	BIT RETAINING RING	OC-12-10
13	O-RING	OC-13-10
14	CHUCK	OC-14-10
15	CYLINDER	OC-15-10