

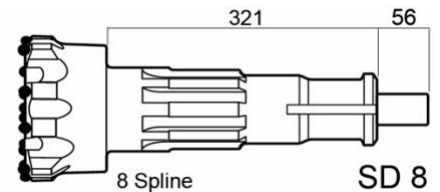
ADVANTAGE

A High performance DTH hammer for all rock conditions and used in almost any drilling applications is suitable for a wide range of air pressures, 7 – 24 bar (100 – 350 psi). Superior Designs, built for drilling 203 – 254 mm (8" – 10") dia. holes the PMK 800HS is designed to accept Button Bits with shank Sandvik Mission SD8 or ATLAS COPCO COP 84L.

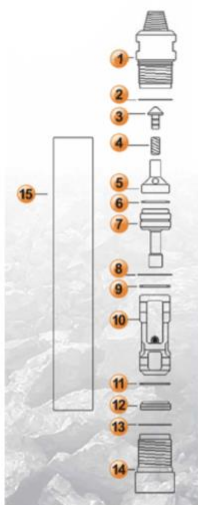
SPECIFICATIONS

HAMMER SPECIFICATIONS		AIR CONSUMPTION			
REVERSE CYLINDER	-	PSI	BAR	CFM	M ³ /min
WEIGHT	170 Kg	150	10,3	500	14,3
LENGTH	1222 mm	200	13,8	660	19
OUTSIDE DIAM. CYLINDER	175 mm	250	17,2	890	24,9
MAX WORKING PRESSURE	24 BAR	300	20,7	1050	33
THREAD	4" 1/2 API REG	350	24	1400	39

TECHNICAL DESIGN



DESCRIPTION PART



ITEM	DESCRIPTION	PART N°
1	BAKHEAD	OC-01-08
2	O-RING	OC-02-08
3	CHECK VALVE	OC-03-08
4	VALVE SPRING	OC-04-08
5	AIR DISTRIBUTOR	OC-05-08
6	SPRING B.	OC-06-08
7	CONTROL TUBE	OC-07-08
8	O-RING	OC-08-08
9	RETAINING RING	OC-09-08
10	PISTON	OC-10-08
11	RETAINING RING	OC-11-08
12	BIT RETAINING RING	OC-12-08
13	O-RING	OC-13-08
14	CHUCK	OC-14-08
15	CYLINDER	OC-15-08

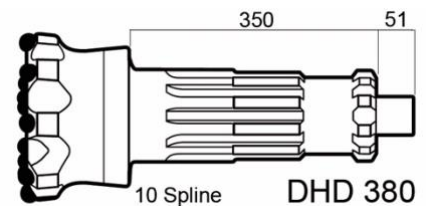
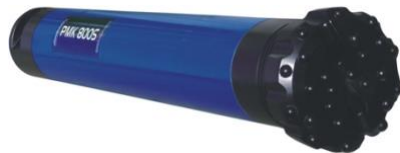
ADVANTAGE

Leader for performance in its class. The PMK 800S HD is the best solution for drilling contractors and owner-operators seeking maximum productivity and the fastest DTH hammer in the world. Heavy duty hammer with 185 mm diameter outer for extended services life in abrasive conditions and is also suitable for water well drilling. Superior Designs, built for drilling 219 – 305 mm (8 5/8" – 12") dia. holes and operates at an optimum air pressure between 10.5 – 24 bar (150 – 350psi). The PMK 800S HD hammer is designed to accept Button Bits with a shank Ingersoll Rand DHD 380 or ATLAS COPCO COP 84.

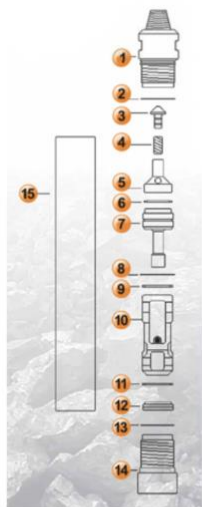
SPECIFICATIONS

HAMMER SPECIFICATIONS		AIR CONSUMPTION			
REVERSE CYLINDER	-	PSI	BAR	CFM	M ³ /min
WEIGHT	194 Kg	150	10,3	479	13,5
LENGTH	1286 mm	200	13,8	738	20,9
OUTSIDE DIAM. CYLINDER	185 mm	250	17,2	1031	29,2
MAX WORKING PRESSURE	24 BAR	300	20,7	1355	38,4
THREAD	4" 1/2 API REG				

TECHNICAL DESIGN



DESCRIPTION PART



ITEM	DESCRIPTION	PART N°
1	BAKHEAD	OC-01-8S
2	O-RING	OC-02-8S
3	CHECK VALVE	OC-03-8S
4	VALVE SPRING	OC-04-8S
5	AIR DISTRIBUTOR	OC-05-8S
6	SPRING B.	OC-06-8S
7	CONTROL TUBE	OC-07-8S
8	O-RING	OC-08-8S
9	RETAINING RING	OC-09-8S
10	PISTON	OC-10-8S
11	RETAINING RING	OC-11-8S
12	BIT RETAINING RING	OC-12-8S
13	O-RING	OC-13-8S
14	CHUCK	OC-14-8S
15	CYLINDER	OC-15-8S

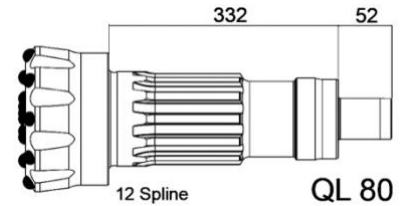
ADVANTAGE

Leader for performance in its class. The PMK 800S HQ is the best solution for drilling contractors and owner-operators seeking maximum productivity and the fastest DTH hammer in the world. Heavy duty hammer with 185 mm diameter outer for extended services life in abrasive conditions and is also suitable for water well drilling. Superior Designs, built for drilling 219 – 305 mm (8 5/8" – 12") dia. holes and operates at an optimum air pressure between 10.5 – 24 bar (150 – 350psi). The PMK 800S HQ hammer is designed to accept Button Bits with a shank Ingersoll Rand QL80 or ATLAS COPCO / EPIROC COP 84 GOLD.

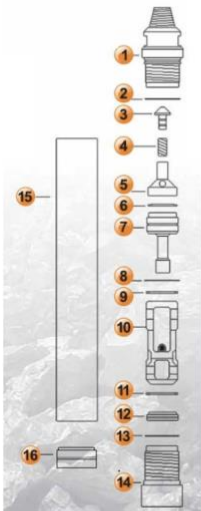
SPECIFICATIONS

HAMMER SPECIFICATIONS		AIR CONSUMPTION			
REVERSE CYLINDER	-	PSI	BAR	CFM	M ³ /min
WEIGHT	194 Kg	150	10,3	479	13,5
LENGTH	1286 mm	200	13,8	738	20,9
OUTSIDE DIAM. CYLINDER	185 mm	250	17,2	1031	29,2
MAX WORKING PRESSURE	24 BAR	300	20,7	1355	38,4

TECHNICAL DESIGN



DESCRIPTION PART



ITEM	DESCRIPTION	PART N°
1	BAKHEAD	OC-01-8S
2	O-RING	OC-02-8S
3	CHECK VALVE	OC-03-8S
4	VALVE SPRING	OC-04-8S
5	AIR DISTRIBUTOR	OC-05-8S
6	SPRING B.	OC-06-8S
7	CONTROL TUBE	OC-07-8S
8	O-RING	OC-08-8S
9	RETAINING RING	OC-09-8S
10	PISTON	OC-10-8S
11	RETAINING RING	OC-11-8S
12	BIT RETAINING RING	OC-12-8S
13	O-RING	OC-13-8S
14	CHUCK	OC-14-8S
15	CYLINDER	OC-15-8S
16	GUIDE BUSH	OC-16-8S

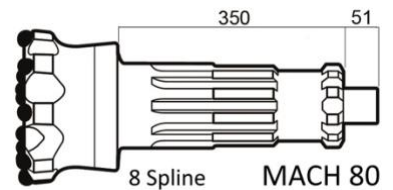
ADVANTAGE

Leader for performance in its class. The PMK 800S MHM is the best solution for drilling contractors and owner-operators seeking maximum productivity and the fastest DTH hammer in the world. Heavy duty hammer with 185 mm diameter outer for extended services life in abrasive conditions and is also suitable for water well drilling. Superior Designs, built for drilling 219 – 305 mm (8 5/8" – 12") dia. holes and operates at an optimum air pressure between 10.5 – 24 bar (150 – 350psi). The PMK 800S MHM hammer is designed to accept Button Bits with shank HALCO MACH 80 type.

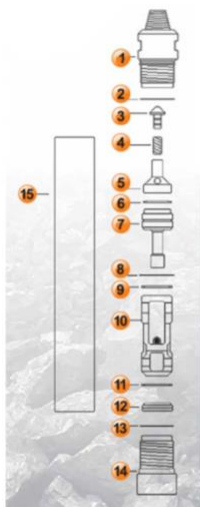
SPECIFICATIONS

HAMMER SPECIFICATIONS		AIR CONSUMPTION			
REVERSE CYLINDER		PSI	BAR	CFM	M ³ /min
WEIGHT	194 Kg	150	10,3	479	13,5
LENGTH	1286 mm	200	13,8	738	20,9
OUTSIDE DIAM. CYLINDER	185 mm	250	17,2	1031	29,2
MAX WORKING PRESSURE	24 BAR	300	20,7	1355	38,4

TECHNICAL DESIGN



DESCRIPTION PART



ITEM	DESCRIPTION	PART N°
1	BAKHEAD	OC-01-8S
2	O-RING	OC-02-8S
3	CHECK VALVE	OC-03-8S
4	VALVE SPRING	OC-04-8S
5	AIR DISTRIBUTOR	OC-05-8S
6	SPRING B.	OC-06-8S
7	CONTROL TUBE	OC-07-8S
8	O-RING	OC-08-8S
9	RETAINING RING	OC-09-8S
10	PISTON	OC-10-8S
11	RETAINING RING	OC-11-8S
12	BIT RETAINING RING	OC-12-8S
13	O-RING	OC-13-8S
14	CHUCK	OC-14-8S
15	CYLINDER	OC-15-8S