

### ADVANTAGE

**Dth Bit and Chuck:** Bit shank with 12 Spline and Hard-Faced Chuck to optimize the Wear Resistance. The GT Series are designed to eliminates the blow tube/foot valve from the drill bit «Tubeless Technology».

**Cylinder:** Hardened and Heavy-Duty Wear Sleeve for optimum resistance in abrasive conditions and increase the Hammer life.

**Piston:** The robust no ported Piston design increases Impact Energy on Drill Bit and improves Drilling Performance.

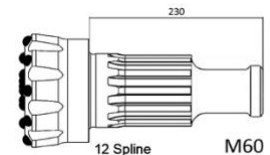
**Choke System:** The GT Series DTH Hammers are equipped with Choke System that allows the driller to adjust the volume of air through the hammer to optimize cutting evacuation and drill under a column of water.

**Air Flow Chamber:** The Innovative Air Flow Chamber optimize the air expansion and compression, by minimizing turbulence and reaching great Piston blow frequency, more penetration rate than 25/30 % with lower Air consumption that means lower fuel costs per drilling meters.

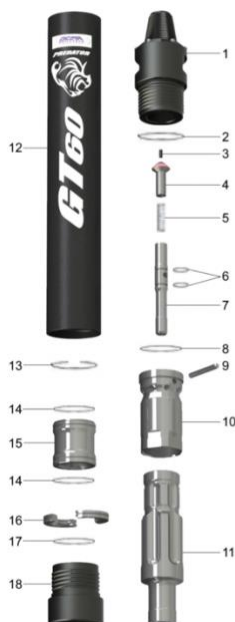
### SPECIFICATIONS

GT60_M HAMMER SPECIFICATIONS		AIR CONSUMPTION / OPERATING PRESSURE			
		PSI	BAR	CFM	M <sup>3</sup> /min
Hammer Outside Diameter	140 / 145 mm				
Hammer Length	1046 mm	150	10.3	286	8.1
Backhead Wrench Flat	114 mm	200	13.8	484	13.7
Drill Bit Shank Type	M60	250	17.2	618	17.5
Backhead Thread Pin	3 1/2" API REG	300	20.7	798	22.6
Drill Bit Range	159 - 203 mm	350	24.1	936	26.5
Hammer Weight	96 Kg	400	27.5	1102	31.2
Make Up Torque	6000 - 8000 Nm	450	31	1271	36

### TECHNICAL DESIGN



### DESCRIPTION PART



ITEM	DESCRIPTION	PART N°
1	BAKHEAD	OCGT60M-01
2	O-RING	OCGT60M-02
3	CHOKE BLANK / 3 / 5 mm	OCGT60M-03
4	CHECK VALVE	OCGT60M-04
5	VALVE SPRING	OCGT60M-05
6	O-RING	OCGT60M-06
7	CONTROL TUBE	OCGT60M-07
8	O-RING	OCGT60M-08
9	PIN	OCGT60M-09
10	INNER CYLINDER	OCGT60M-10
11	PISTON	OCGT60M-11
12	CYLINDER	OCGT60M-12
13	RETAINING RING	OCGT60M-13
14	O-RING	OCGT60M-14
15	GUIDE BUSH	OCGT60M-15
16	BIT RETAINING RING	OCGT60M-16
17	O-RING	OCGT60M-17
18	CHUCK	OCGT60M-18

### ADVANTAGE

**Dth Bit and Chuck:** Bit shank with 12 Spline and Hard-Faced Chuck to optimize the Wear Resistance. The GT Series are designed to eliminates the blow tube/foot valve from the drill bit «Tubeless Technology».

**Cylinder:** Hardened and Heavy-Duty Wear Sleeve for optimum resistance in abrasive conditions and increase the Hammer life.

**Piston:** The robust no ported Piston design increases Impact Energy on Drill Bit and improves Drilling Performance.

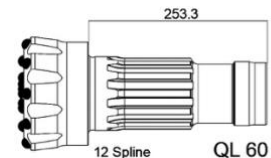
**Choke System:** The GT Series DTH Hammers are equipped with Choke System that allows the driller to adjust the volume of air through the hammer to optimize cutting evacuation and drill under a column of water.

**Air Flow Chamber:** The Innovative Air Flow Chamber optimize the air expansion and compression, by minimizing turbulence and reaching great Piston blow frequency, more penetration rate than 25/30 % with lower Air consumption that means lower fuel costs per drilling meters.

### SPECIFICATIONS

GT60_Q HAMMER SPECIFICATIONS		AIR CONSUMPTION / OPERATING PRESSURE			
		PSI	BAR	CFM	M <sup>3</sup> /min
Hammer Outside Diameter	140 / 145 mm				
Hammer Length	1046 mm	150	10.3	286	8.1
Backhead Wrench Flat	114 mm	200	13.8	484	13.7
Drill Bit Shank Type	QL60 Without Foot Valve	250	17.2	618	17.5
Backhead Thread Pin	3 1/2" API REG	300	20.7	798	22.6
Drill Bit Range	159 - 203 mm	350	24.1	936	26.5
Hammer Weight	96 Kg	400	27.5	1102	31.2
Make Up Torque	6000 - 8000 Nm	450	31	1271	36

### TECHNICAL DESIGN



### DESRPTION PART



ITEM	DESCRIPTION	PART N°
1	BAKHEAD	OCGT60Q-01
2	O-RING	OCGT60Q-02
3	CHOKE BLANK / 3 / 5 mm	OCGT60Q-03
4	CHECK VALVE	OCGT60Q-04
5	VALVE SPRING	OCGT60Q-05
6	O-RING	OCGT60Q-06
7	CONTROL TUBE	OCGT60Q-07
8	O-RING	OCGT60Q-08
9	PIN	OCGT60Q-09
10	INNER CYLINDER	OCGT60Q-10
11	PISTON	OCGT60Q-11
12	CYLINDER	OCGT60Q-12
13	RETAINING RING	OCGT60Q-13
14	O-RING	OCGT60Q-14
15	GUIDE BUSH	OCGT60Q-15
16	BIT RETAINING RING	OCGT60Q-16
17	O-RING	OCGT60Q-17
18	CHUCK	OCGT60Q-18